



MODEL NAME

TEAAN402240-000



MOUNTING PITCH

51*20_{mm}

OVER ALL DIMENSION

40_W*22_H*40_Lmm

WEIGHT

37_G±5%

MATERIAL	AL SINK + FAN
THERMAL INTERFACE MATERIAL	T725
THERMAL RESISTANCE	2 (°C/W)
FAN DIMENSION	Axial Fan 4010
RATED SPEED	5800 RPM + 15% at rated voltage
AIR FLOW	7.0 CFM
ACOUSTIC NOISE	20.6 dB(A)

NOTE

Test Conditions: Heater Dimension: 15*15mm ; Power: 10W ; Ta: Chamber40°C ; Tc: 60°C

HEATSINK MODEL NAME : TEANN381036-010



MODEL NAME

TEAAN603060-001



MOUNTING PITCH

51*51_{mm}

OVER ALL DIMENSION

60_W*30_H*60_Lmm

WEIGHT

125_{G±5%}

<u>MATERIAL</u>	AL SINK + FAN
<u>THERMAL INTERFACE MATERIAL</u>	HENKEL PSX
<u>THERMAL RESISTANCE</u>	0.61 (°C/W)
<u>FAN DIMENSION</u>	Axial Fan 6010
<u>RATED SPEED</u>	4000 RPM + 15% at rated voltage
<u>AIR FLOW</u>	16.3 CFM
<u>ACOUSTIC NOISE</u>	28.5 dB(A)

NOTE

Test Conditions: Heater Dimension: 30*30mm ; Power: 15W ; Ta: Chamber40°C ; Tc: 50°C



MODEL NAME

TEAAN282028-002



MOUNTING PITCH

OVER ALL DIMENSION

WEIGHT

32.9*32.9_{mm}

28.2_W*20_H*28.2_{Lmm}

20_{G±5%}

<u>MATERIAL</u>	AL SINK + FAN
<u>THERMAL INTERFACE MATERIAL</u>	T725
<u>THERMAL RESISTANCE</u>	2.268 (°C/W)
<u>FAN DIMENSION</u>	Axial Fan 3010
<u>RATED SPEED</u>	8600 RPM + 15% at rated voltage
<u>AIR FLOW</u>	4.6 CFM
<u>ACOUSTIC NOISE</u>	20.0 dB(A)

NOTE

Test Conditions: Heater Dimension: 20mm ; Power: 5W ; Ta: Chamber: 40°C ; Tc: 51°C

HEATSINK MODEL NAME : TEANN281028-005



MODEL NAME

TEAAN957000-004



MOUNTING PITCH

75*75_{mm}

OVER ALL DIMENSION

Ø95_w*69.8_{Hmm}

WEIGHT

423_{G±5%}

<u>MATERIAL</u>	<u>AL SINK + FAN</u>
<u>THERMAL INTERFACE MATERIAL</u>	<u>HQ-G50</u>
<u>THERMAL RESISTANCE</u>	<u>0.203 (°C/W)</u>
<u>FAN DIMENSION</u>	<u>Dish Fan 9625</u>
<u>RATED SPEED</u>	<u>4500 RPM + 10% at rated voltage</u>
<u>AIR FLOW</u>	<u>80.06 CFM</u>
<u>ACOUSTIC NOISE</u>	<u>50.0 dB(A)</u>

NOTE

Test Conditions: Heater Dimension: 30*30mm ; Power: 95W ; Ta: Chamber: 40°C ; Tc: 60°C



MODEL NAME

TEAAN954700-005



MOUNTING PITCH

75*75_{mm}

OVER ALL DIMENSION

Ø95_w*46.4_{Hmm}

WEIGHT

279.6_{G±5%}

<u>MATERIAL</u>	<u>AL SINK + FAN</u>
<u>THERMAL INTERFACE MATERIAL</u>	<u>HQ-G50</u>
<u>THERMAL RESISTANCE</u>	<u>0.252 (°C/W)</u>
<u>FAN DIMENSION</u>	<u>Dish Fan 9625</u>
<u>RATED SPEED</u>	<u>4500 RPM + 10% at rated voltage</u>
<u>AIR FLOW</u>	<u>80.06 CFM</u>
<u>ACOUSTIC NOISE</u>	<u>50.0 dB(A)</u>

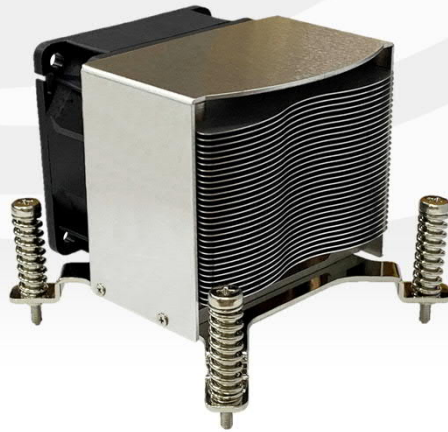
NOTE

Test Conditions: Heater Dimension: 30*30mm ; Power: 45W ; Ta: Chamber: 40°C ; Tc: 52°C



MODEL NAME

TPAAP706575-000



MOUNTING PITCH

75*75_{mm}

OVER ALL DIMENSION

70_W*65_H*75_L_{mm}

WEIGHT

300_{G±5%}

<u>MATERIAL</u>	AL SINK + FAN
<u>THERMAL INTERFACE MATERIAL</u>	N/A
<u>THERMAL RESISTANCE</u>	0.185 (°C/W)
<u>FAN DIMENSION</u>	Axial Fan 6025
<u>RATED SPEED</u>	7600 RPM + 10% at rated voltage
<u>AIR FLOW</u>	35.0 CFM
<u>ACOUSTIC NOISE</u>	47.6 dB(A)

NOTE

Test Conditions: Heater Dimension: 30*30mm ; Power: 95W ; Ta: Chamber: 40°C ; Tc: 58°C



MODEL NAME

TSCBN852682-000



MOUNTING PITCH

75*75_{mm}

OVER ALL DIMENSION

85_W*26.3_H*82_Lmm

WEIGHT

387_{G±5%}

MATERIAL	Cu SINK + FAN
THERMAL INTERFACE MATERIAL	X23-7762
THERMAL RESISTANCE	0.38(°C/W)
FAN DIMENSION	Blower Fan 8015
RATED SPEED	4500 RPM + 10% at rated voltage
AIR FLOW	11.12 CFM
ACOUSTIC NOISE	56 dB(A)

NOTE

Test Conditions: Heater Dimension: 30*30mm ; Power: 65W ; Ta: Chamber: 25°C ; Tc: 50°C